

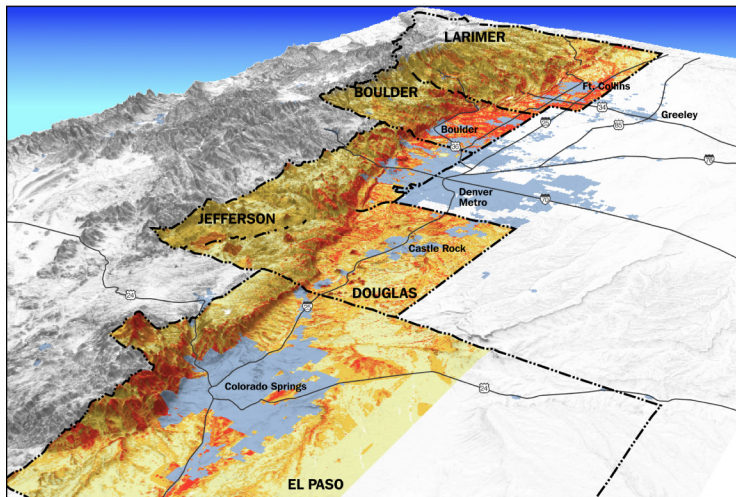
FRONT RANGE MOUNTAIN BACKDROP

Larimer, Boulder, Jefferson, Douglas & El Paso Counties
Front Range Alliance & Colorado Conservation Trust

Colorado's Front Range is visually defined by the mountain backdrop. This dramatic intersection of the Great Plains and Rocky Mountains draws visitors to the region and is a source of great pride among residents. In an effort to preserve this unique physical feature, five Front Range counties joined in a collaborative effort to prioritize areas with high visual and natural resource value. Now the torch has been handed to a private non-profit business group and conservation organizations to further address identifying and prioritizing conservation objectives.

The multi-jurisdictional nature of this ongoing effort has proven to be a challenge for data collection and integration. Issues pertaining to land use regulation and policy differences between jurisdiction also provide challenges in quantifying development potential. Using a dual strategy of analyzing resource value and development threat, Computer Terrain Mapping, Inc. is working to help establish conservation priorities for this beautiful and threatened region.

Natural resource composite of five county Mountain Backdrop area looking to the NW.



Front Range Mountain Backdrop from along Hwy 93 in Boulder and Jefferson Counties.

